

Cellvizio® Food Allergy Sensitivity Test (FAST) Quick Guide

1



Perform a standard gastroscopy to observe any sign(s) of abnormal mucosal structural defect that may explain the symptoms.



If abnormality observed, the endoscopic procedure may not be applicable.

2

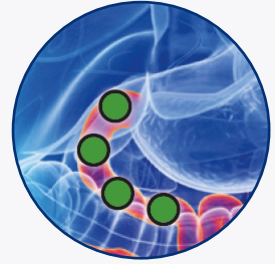


Position the endoscope in the duodenum and insert the probe into the operating channel of the endoscope.



The use of a dual channel endoscope is recommended.

3

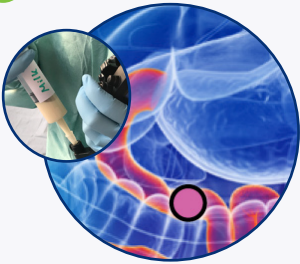


Perform Cellvizio imaging on the duodenum at a minimum of **4 sites** during **20 sec.** to verify mucosal integrity and to establish a baseline.



If the mucosa shows a positive reaction then no allergen challenge will be possible.

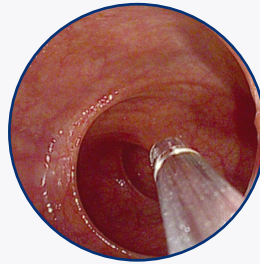
4



Remove the probe, apply one of the food allergens to the duodenum mucosa and wait **2 min.**

→ Start in the distal portion and with the food allergen that will less likely trigger a reaction.

5



Place the probe on the surface of the mucosa in contact with the allergen for **3 min.**

If the observed reaction is positive (CLE+), conclude the test.

6

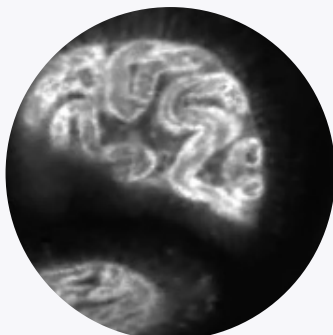
If the observed reaction is negative (CLE-):



Extract the probe, flush with saline in the working channel. And repeat from **step 4** by moving the endoscope to another site (more proximal).

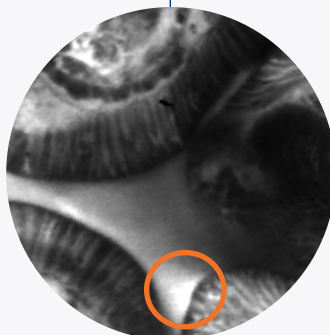
Continue until you have a positive reaction without exceeding 30 min of total procedure time.

Negative reaction/Control



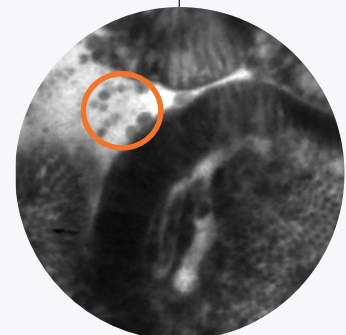
Lack of reaction

Positive reaction



Fluorescence leakage

+



Cell shedding

ALLERGEN PREPARATION

Suggested Concentrations for Most Common Food Allergens

NUTRIENT	AMOUNT	SALINE
Wheat Flour	3g	30mL
Dry Yeast	1,5g	30mL
Soy Flour	3g	30mL
Cow's Milk Powder	1,5g	30mL
Dry Egg White	1,5g	30mL
Peanut Flour	3g	30mL

1



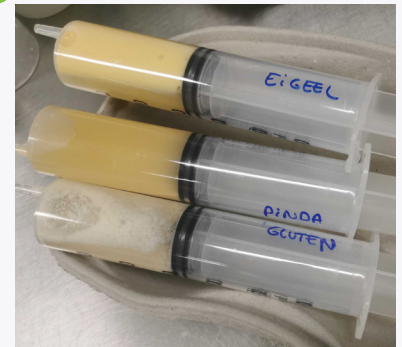
Weigh the powder using a scale.

2



Place the powder in a recipient, add the saline solution and mix.

3



Aspirate the content with a 50mL syringe, shake it to avoid lumps.



**DISCOVER IMAGE PATTERN RECOGNITION
ON CELLVIZIO.NET**



This guide is based on the white paper Endoscopic Diagnosis of Atypical Food Allergies New method White paper 2020 written by Prof. Kiesslich R.

Cellvizio® 100 Series and I.V.E Systems with Confocal Miniprbes™ are regulated Medical Device, CE marked (CE 0459, GMED) (Class IIa - NB : G-MED) and FDA cleared. Cellvizio® 100 Series and I.V.E Systems with Confocal Miniprbes™ are confocal laser systems with fiber optic probes that are intended to allow imaging of the internal microstructure of tissues including, but not limited to, the identification of cells and vessels and their organization or architecture. Please consult labels and instructions for use. The use of this medical device is exclusively reserved for health professionals.

Cellvizio®
SEE CELLS. CHANGE LIVES.